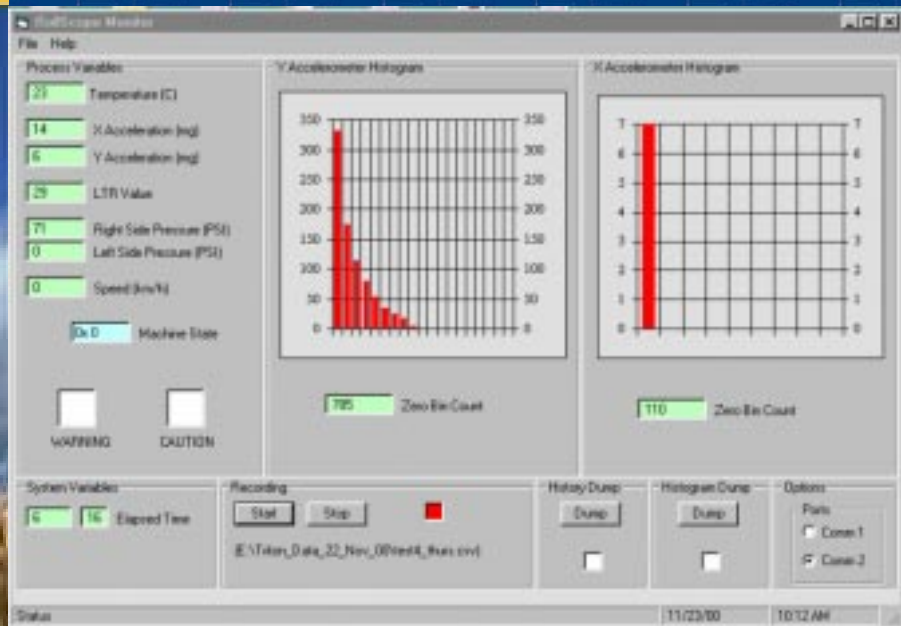




RollScope™



Roaduser's rollover monitoring system RollScope™ is a new truck driver assistance device designed to provide drivers and fleet management with information concerning a vehicle's proximity to rollover during normal on-highway operations. This information is in the form of incidents recorded on the truck's on-board computer and a visual alert activated in the cab.

RollScope™ software supports a tiered approach to rollover management:

- Visual caution and Rollover Alert (real time)
- Reviewing frequency of cautions and Alerts (stored data)
- Reviewing reasons for high frequency of Alerts (stored data)
- Accident report (stored data).

The rollover proximity information relates to the destabilising transfer of load from one side of the vehicle to the other and is valid in steady-state turns (such as freeway ramps) as well as emergency avoidance type manoeuvres. The information recorded on the on-board computer provides insight into an individual driver's manoeuvre severity habits and the visual alert provides driver feedback and training. A meaningful warning of impending rollover is also provided in some circumstances: a Canadian study found that up to one half of rollovers could be prevented with a rollover warning device.

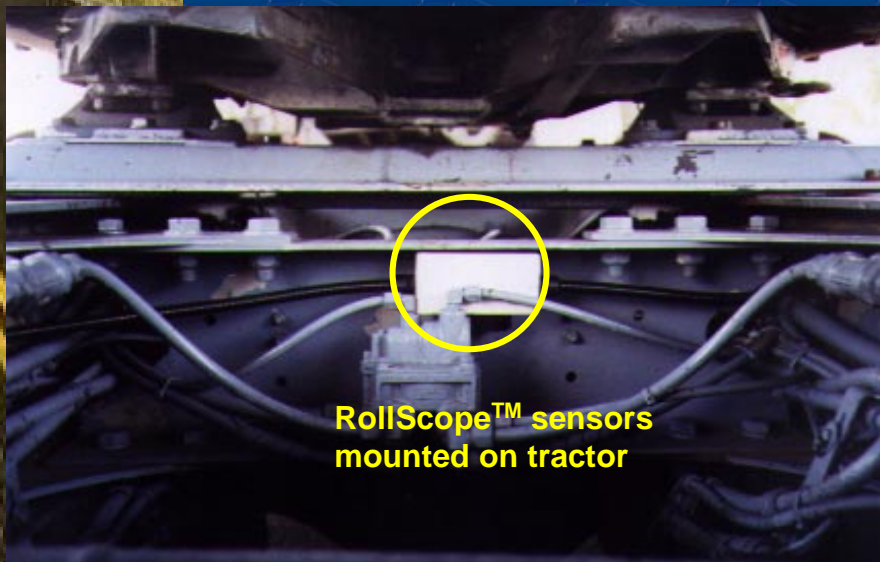
RollScope™ is designed to operate on single-unit as well as multi-unit combinations. RollScope™ consists of sensors attached to the vehicle, a central processor with software, a dash-mounted visual alert and associated cabling and connections. RollScope™ is entirely tractor-mounted.



RollScope™ intellectual property is wholly owned by Roaduser International Pty Ltd and is currently the subject of a patent application

Following some high-profile fuel tanker rollovers, Roaduser joined with The Shell Company of Australia (Australia's largest oil company), in 1996, to develop RollScope™ and implement it in the Shell fleet. RollScope™ was designed from the outset to combat the precise rollover scenarios that have actually occurred with high-COG vehicles, and for which Roaduser had carried out computer-based reconstruction.

Drivers have little awareness of their proximity to rollover and some drivers tend to operate relatively close to rollover on a fairly frequent basis. RollScope™ is therefore designed to better inform drivers of the rollover performance of the vehicles they are required to operate, to provide a record of instances of near rollovers in a form that can be used by fleet management and to provide real-time feedback to drivers.



**RollScope™ sensors
mounted on tractor**

For Further Info
Contact:

Roaduser International Pty Ltd
525 Spencer St
Melbourne
3003

Victoria Australia
Email: info@roaduser.com.au
Web: www.roaduser.com.au